

# THE DRICONEQ™ RANGE OF TUBULAR PRODUCTS

Drill string solutions with real value



# DRICONEQ™ OFFER THE COMPLETE PACKAGE

Driconeq Group offers a complete range of world class drill string components for the mining, quarrying, water well and ground engineering industries





## WORLD CLASS FEATURES THAT BRING REAL VALUE

Driconeq™ tubular products, the choice of today's drilling professionals. Unique features that offer real value:

### **Cold drawn seamless pipe**

- Straighter drill pipes mean smoother drilling with less stress on the drill rig.
- Higher strength pipe allows for thinner wall thickness and less weight.
- Smooth inner bore prevents scale from entering tooling.

### **Case hardened threads**

- Case hardening ensures that Driconeq™ pipe threads last at least 50 % longer than industry standard threads.

## Less weight

- Less weight in your drill string allows for drilling deeper holes utilizing lower pull back capacity or lower pull back capacity when investing for the same hole depth.

## Energy efficient internal design

- Driconeq™ drill pipes are designed and manufactured to minimize and optimize energy consumption.
- Driconeq™ RC pipes have among the lowest pressure drop in the industry.

## Friction welded pipe

- Friction welded pipe eliminates the need for shrink fitting ensuring less weight.
- 100% metal to metal joint with parent metal properties and low temperature process generates small HAZ (Heat Affected Zone) ensures high strength with a low risk of failure.

## Long life and low energy consumption

- Drillers save money with less annual consumption and lower fuel costs.



Hole length up to  
**2 500 m**

Hole diameter up to  
**1 000 mm**





# APPLICATIONS

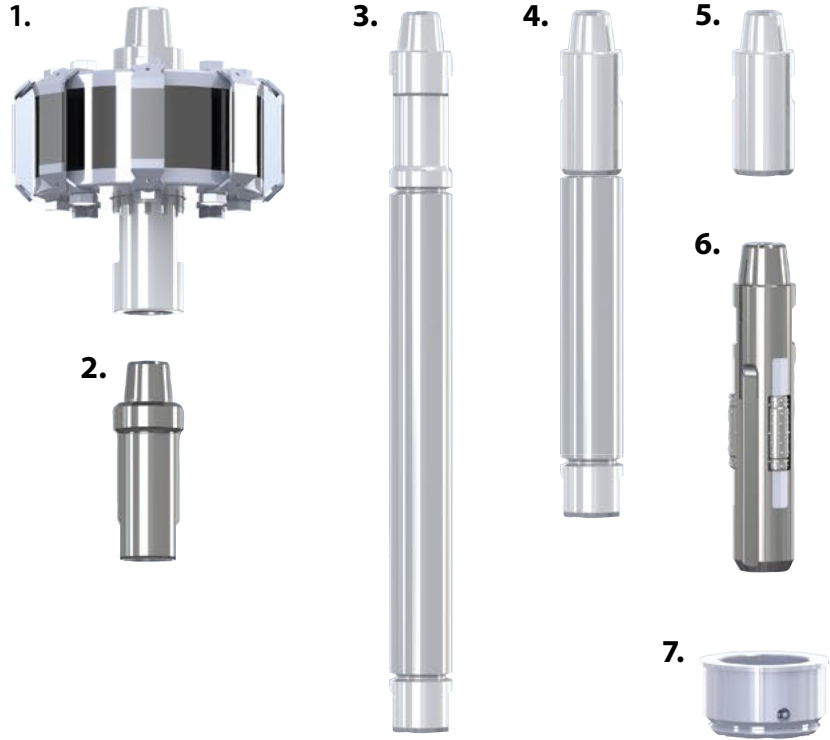
- EXPLORATION
- GEOTHERMAL
- WATER WELL
- FOUNDATION
- QUARRYING
- OPEN PIT MINING
- UNDERGROUND MINING



# **TUBULAR EQUIPMENT FOR MOST DRILLING METHODS**

- ROTARY
- RC (REVERSE CIRCULATION)
- DTH (DOWN THE HOLE)

# THE **ROTARY** DRILLSTRING

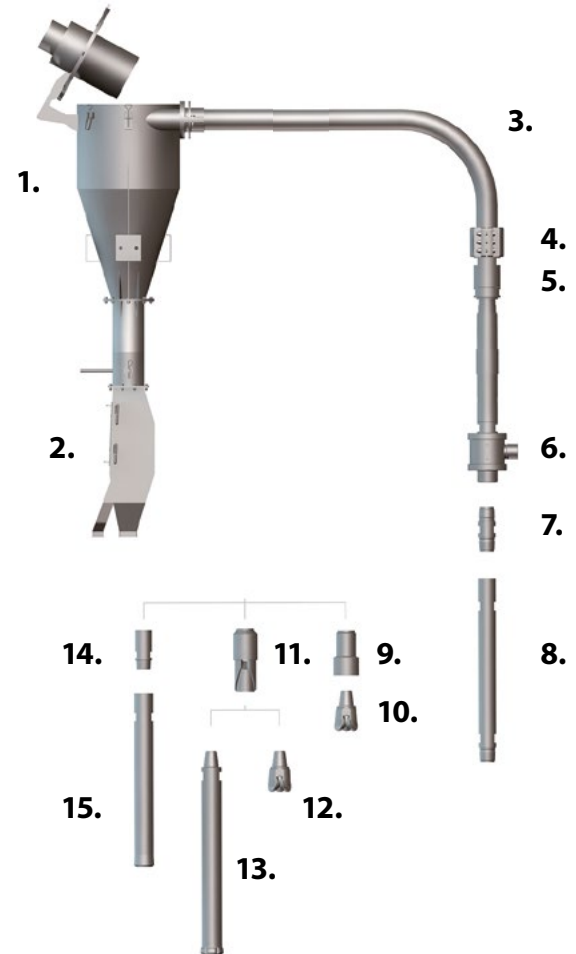


1. **Shock sub**
2. **Saver sub/Top sub**
3. **Drill pipe**
4. **Starter pipe**
5. **Bit sub**
6. **Roller stabilizer**
7. **Rotary deck bushing**

Driconeq™ offer the complete rotary drill string for all models of rotary drill rig.

# THE RC SET UP

- |                               |                                  |
|-------------------------------|----------------------------------|
| 1. Cyclone                    | 9. Rock bit sub                  |
| 2. Splitter                   | 10. Tricone/drag bit open centre |
| 3. Deflector (Cutting outlet) | 11. Interchange sub              |
| 4. Blow down/up valve         | 12. Tricone/drag bit             |
| 5. Sample Swivel              | 13. Standard DTH Hammer          |
| 6. Air inlet swivel           | 14. Cross over sub               |
| 7. Saver sub                  | 15. RC hammer                    |
| 8. RC pipe                    |                                  |

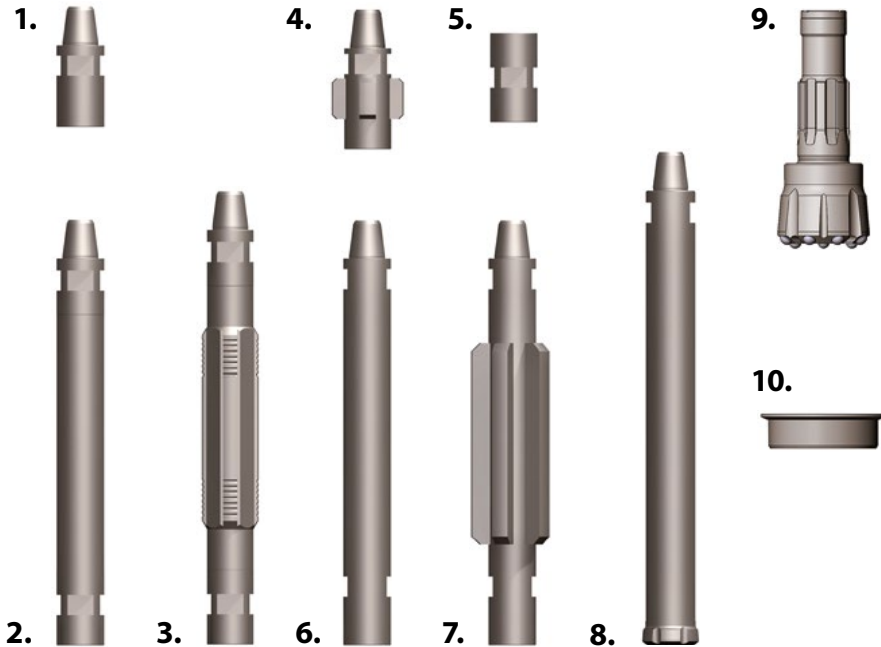


Driconeq™ RC products come with the following connections compatible with:

- |                |          |
|----------------|----------|
| • Driconeq DR™ | • Matrix |
| • ARD™         | • Faber  |
| • Remet        | • Metzke |



## THE DTH DRILLSTRING



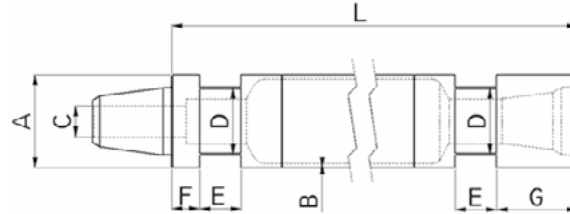
1. Saver sub
2. Drill pipe
3. Guide rod
4. Guide sleeve
5. Cross over sub
6. Drill collar
7. Stabilizer
8. DTH hammer
9. DTH hammer bit
10. Deck bush

Driconeq™ offer multiple DTH drill string configurations to fit your drill rig.  
**See following pages.**

## Standard DTH Pipe

Diameter: **A = 38–405 mm/1,5"–16"**

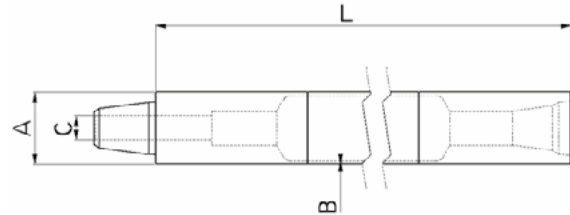
Length: **L = 500–12 192 mm/1,6'–40'**



## Atlas Copco ROC

Diameter: **A = 70–140 mm/2,75"–5,5"**

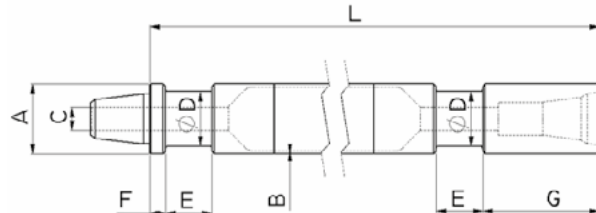
Length: **L = 2 000–6 000 mm/6,6'–19,7'**



## Atlas Copco Simba UG

Diameter: **A = 89–114 mm/3,5"–4,5"**

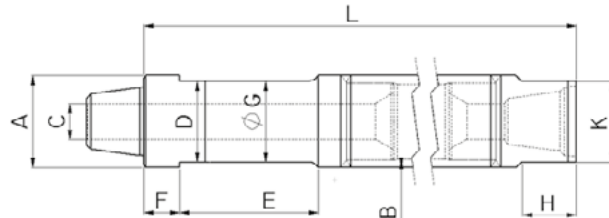
Length: **L = 1 500–1 820 mm/4,9'–6'**

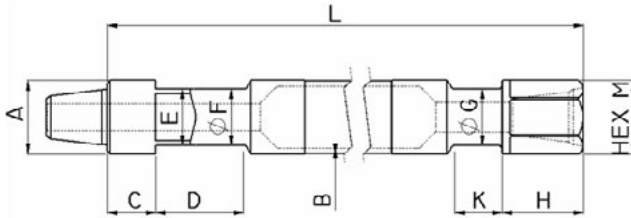


## AC/IR Pipe

Diameter: **A = 89–273 mm/3,5"–10,7"**

Length: **L = 2 438–13 716 mm/8'–45'**

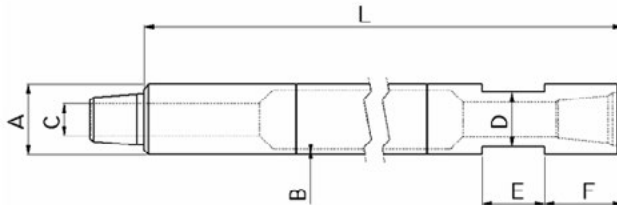




## AC/IR T4/DM45

Diameter: **A = 102–194 mm/4"–7,6"**

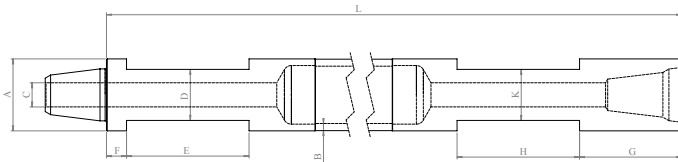
Length: **L = 6 096–10 668 mm/20'–35'**



## AC/IR TH60/T3W

Diameter: **A = 89–114 mm/3,5"–4,5"**

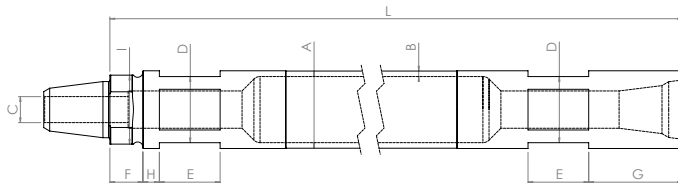
Length: **L = 6 096 mm/20'**



## AC/IR DM25/DM30

Diameter: **A = 89–102 mm/3,5"–4"**

Length: **L = 6 400–9 144 mm/21'–30'**



## AC/IR CM (695/760/780)

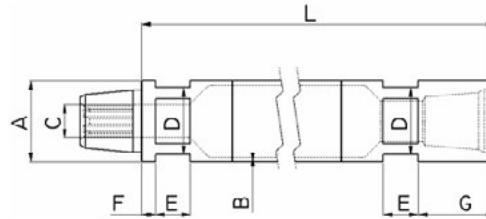
Diameter: **A = 76–102 mm/3"–4"**

Length: **L = 2 000–5 000 mm/6,6'–16,4'**

## Sandvik Cubex/QXR

Diameter: **A = 76–127 mm/3"–5"**

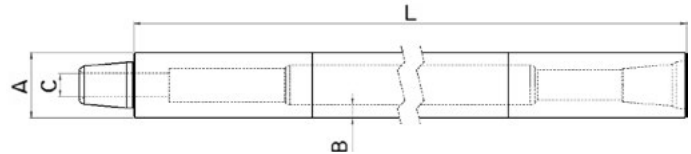
Length: **L = 1 196–6 096 mm/3,9'–20'**



## Sandvik QXR

Diameter: **A = 89–140 mm/3,5"–5,5"**

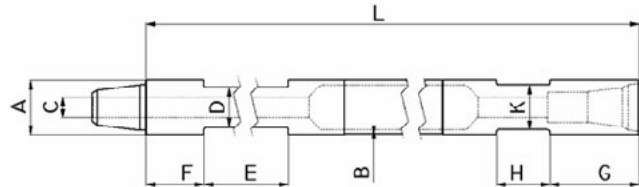
Length: **L = 4 877–6 096 mm/16'–20'**



## Sandvik Driltech Gator

Diameter: **A = 76–114 mm/3"–4,5"**

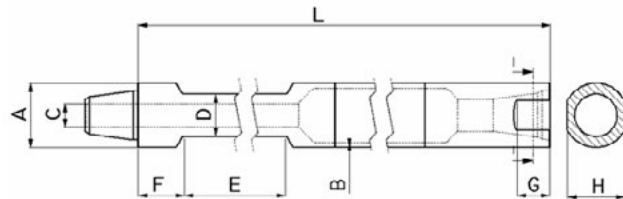
Length: **L = 2 896–6 096 mm/9,5'–20'**

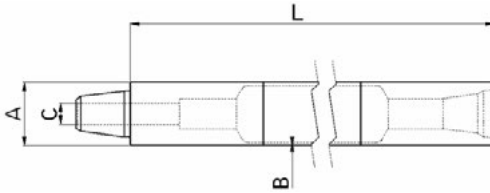


## Sandvik Driltech T25KW/D25/40/50/75/90

Diameter: **A = 89–219 mm/3,5"–8,6"**

Length: **L = 2 000–12 192 mm/6,6'–40'**

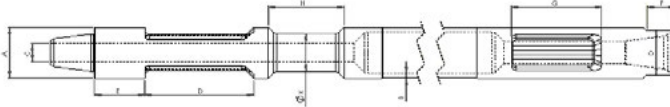




## Sandvik BPI

Diameter: **A = 76–140 mm/3"-5,5"**

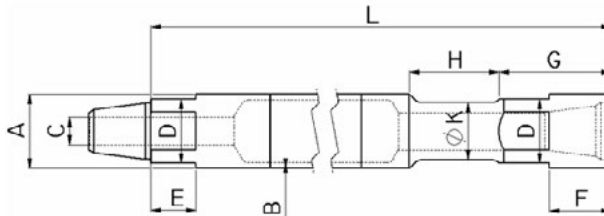
Length: **L = 1 500–7 500 mm/4,9'-24,6'**



## Reichdrill

Diameter: **A = 89–140 mm/3,5"-5,5"**

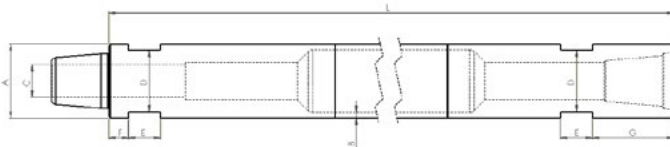
Length: **L = 6 096–10 668 mm/20'-35'**



## Schramm Carousel

Diameter: **A = 89–114 mm/3,5"-4,5"**

Length: **L = 6 096–7 620 mm/20'-25'**



## Schramm TX130

Diameter: **A = 114–140 mm/3,5"-5,5"**

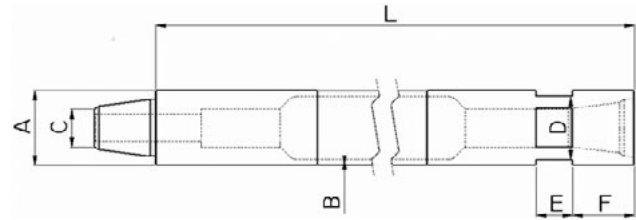
Length: **L = 6 096–10 000 mm/20'-32,8'**



## Schramm T64

Diameter: **A = 89–140 mm/3,5"–5,5"**

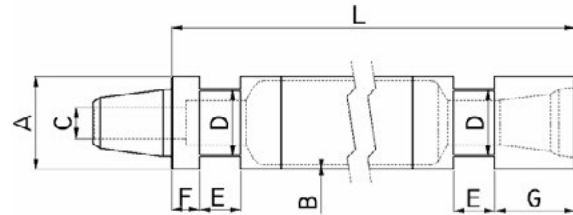
Length: **L = 2 438–9 144 mm/8'–30'**



## Schramm NT/WF

Diameter: **A = 89–178 mm/3,5"–7"**

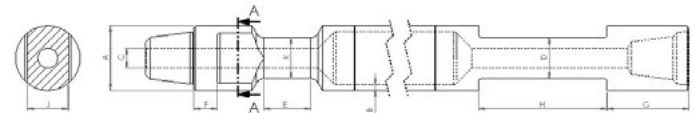
Length: **L = 6 096–9 144 mm/20'–30'**



## CAT (Reedrill, SKS, SKF, MD)

Diameter: **A = 102–273 mm/4"–10,7"**

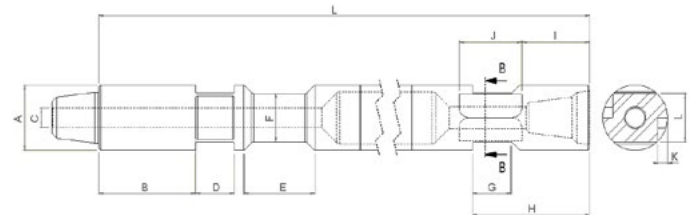
Length: **L = 7 620–10 668 mm/25'–35'**



## CAT Bucyrus

Diameter: **A = 102–273 mm/4"–10,7"**

Length: **L = 7 620–10 668 mm/25'–35'**





# DRILL PIPES

Technical specification

## TUBING

### **Cold drawn, seamless tube, grade N-80**

- Yield strength, min. 552 N/mm<sup>2</sup>
- Tensile strength, min. 689 N/mm<sup>2</sup>
- Elongation min. 15 %

## TOOL JOINTS

### **Micro alloy steel which is case hardened**

- Surface hardness 58-62 HRC
- Case depth 0,1-0,2 mm
- Core hardness 32-36 HRC
- The hardness of the thread gives 50% longer life time than industry standard threads.

# WANT MORE OUT OF YOUR DRILL PIPE?

One very important part of the drill string drillers don't talk about is the wear sub. Changing your wear sub regularly will dramatically increase the life of your drill string.

Driconeq™ use state of the art heat treatment and high quality alloy materials in the manufacture of our wear subs, ensuring the maximum life for your drill string.









Specialised and standard products are available  
for DTH, RC and ROTARY drilling methods.

For all types of drill rigs, in all locations.

**Contact us for more information**

**[driconeq.com](http://driconeq.com)**

---



© Driconeq 2016